



AT A Glance

177

Projects
implemented
(2003-2025)



57

Funding
partners



41

Staff,
associates
and advisers



33

Countries &
territories
worked in



Working for Nature & People

Innovating for equity, resilience and sustainability in the Caribbean



About Us:

Established in 1989, CANARI is legally registered in Barbados, Jamaica, Saint Lucia, St. Vincent and the Grenadines, the United States Virgin Islands and Trinidad and Tobago. It has charitable status in the USA and Trinidad and Tobago.

CANARI is headquartered in Trinidad and Tobago and has staff located in several other Caribbean countries.

We are governed by a Board of Directors that operates through an innovative structure called the Partnership which facilitates a collaborative approach with staff.

CANARI is primarily funded through the award of grants for projects and through strategic partnerships with regional and international intergovernmental agencies, private foundations, and non-profit organisations. We pursue diverse and flexible funding sources to support our mission and ensure long-term impact and sustainability.

The Caribbean Natural Resources Institute (CANARI) is an independent, technical institute working across the Caribbean with a mission to promote and facilitate stakeholder participation and collaboration in the stewardship of renewable natural resources in the Caribbean.

CANARI People and Nature

At CANARI, we put people at the centre of natural resource governance and management. Our work encompasses promoting community participation through co-management of natural resources and leading efforts that challenge the development paradigm and transform systems and institutions. We work to ensure that people – especially those who are most vulnerable – are not just beneficiaries, but drivers of change.

We recognise the far-reaching impacts of poverty, inequality and injustices, and we are committed to supporting the rights and voices of the least powerful stakeholders. Strong civil society engagement is essential for inclusive, equitable and lasting change. We believe that Caribbean people, governments and communities must work together, empowered with information, capacity and intra-regional and global linkages to achieve the equity, wellbeing and resilience that are the basis for a healthy environment and long-term prosperity.



Grenada Watershed Rehabilitation. Credit: CANARI

Sustaining our Caribbean

The wellbeing of our people, livelihoods and economies across the Caribbean depends on healthy ecosystems and the sustainable use of our natural resources. Yet these assets are increasingly under threat. Degradation and loss of biodiversity and ecosystem services are the result of unsustainable practices in key sectors such as tourism, agriculture and urban development. Climate change further intensifies these challenges. We need to rethink how we manage the environment and improve policies and governance so that they encourage and support sustainable development.

Where We Work

CANARI works across the Caribbean, with projects and programmes at local, national and regional levels. Our local and national work initially focused on the island countries and territories of the region and later expanded to include continental CARICOM countries. We have acquired substantial experience and developed deep relationships over our more than 35 years of work.

We also engage in international processes as an advocate for Caribbean sustainable development and to share experiences from the region while learning from other countries and regions facing similar issues.

How We Work



Policy and practice:

CANARI's technical expertise is sought by governments, intergovernmental organisations and other stakeholders on topics ranging from protected areas, biodiversity conservation, fisheries, climate change, and civil society engagement to the blue-green economy.

The Institute has developed key regional strategies such as the Eastern Caribbean States (OECS) Biodiversity and Ecosystems Management Framework and Strategic Action Plans for member governments.



Piloting and scaling ecosystem-based approach:

CANARI conducts multi-disciplinary research to support the conservation and restoration of ecosystems, combining scientific data with local and Indigenous knowledge.

CANARI used this approach to coordinate broad stakeholder engagement in delivery of Grenada's National Ecosystem Assessment.



Building local resilience:

CANARI works to improve the enabling policy and governance frameworks for climate change, disaster management and resilience. We build local resilience through strengthening the capacity of key Caribbean civil society partners to plan, implement, and monitor climate resilience initiatives, including just, locally led and ecosystem-based approaches.

From 2024-2025, CANARI provided training and supported vulnerability assessments in 10 coastal communities in Trinidad and Tobago, involving participatory GIS, developing historical timelines of changes and household surveys. Climate change impacts from coastal erosion, inland flooding during heavy rainfall, water shortages, and sargassum influxes were highlighted, and community resilience plans developed to address these impacts.



Participatory natural resource governance and management:

CANARI facilitates more meaningful participation of a diverse range of stakeholders in sustainable development initiatives. We support inclusive governance models that recognise the rights, knowledge and leadership of local communities, resource users and civil society. We foster collaboration among government, civil society, and communities, and support the development of co-management arrangements, community-based solutions, and policies that enable more equitable and effective conservation and sustainable use of natural resources.

As the regional implementation team for the Critical Ecosystem Partnership Fund (CEPF)'s investment in the Caribbean, CANARI strengthens civil society's organisational and technical capacity to protect globally significant biodiversity.



Capacity building:

CANARI facilitates training, mentoring, coaching, peer exchanges, and action learning processes to strengthen environmental governance and institutional capacity from local to regional levels. We channel funding, information and technical support to civil society and other local organisations. We develop toolkits to support trainers and promote wider uptake.

CANARI co-convened the CSO Coalition for Forests in Jamaica to build capacity for advocacy of participatory budgeting approaches for the forest sector.



Knowledge sharing:

CANARI has facilitated many multi-stakeholder regional exchanges, peer-to-peer learning events, and communities of practice that have strengthened regional solidarity and cross-country collaboration.

We use participatory ICTs (e.g., the GIS Story Map: 'From the Ground up: A spotlight on civil society and community-led ecosystem restoration in the Caribbean') to help communities and other stakeholders document their stories, and have developed online knowledge platforms such as the Caribbean Resilience Knowledge Platform.



Strengthening sustainable and community-led livelihoods:

CANARI develops and promotes successful models and tools for community-based ecotourism, agroecology, and sustainable fisheries across the region.

The Local Green-Blue Enterprise Radar developed by CANARI helps local community small and micro nature-based enterprises assess how they are delivering 'triple bottom line' benefits (economic, environmental and social) and good governance.



Civil society engagement, networking and coalition building:

CANARI supports civil society to engage meaningfully in national and regional decision-making processes by facilitating and supporting local, national, regional and global networks and coalitions - which share knowledge, amplify voices and enable collective action.

CANARI convenes the Caribbean Climate Justice Alliance as a regional coalition and grassroots movement to transform policy and practice and catalyse action for climate justice and a just transition.





Our strategic directions and programmes

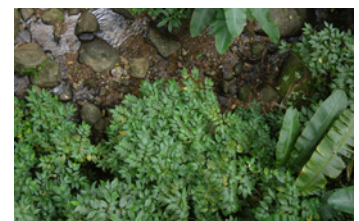
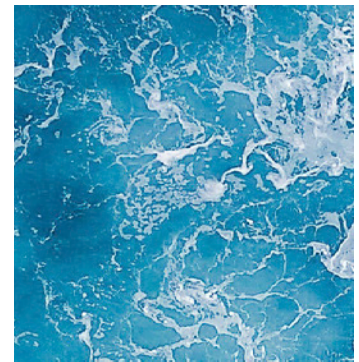
CANARI's five strategic directions, set out in our **Strategic Plan 2021 – 2030**, focus our work on resilience, biodiversity and ecosystems, equity and justice, participatory governance and innovation. They reflect where we can make the greatest impact on natural resource management and sustainable development. To put them into action, CANARI has corresponding dedicated programmes that provide a framework for initiatives and partnerships that deliver measurable results on the ground and influence policy at local, national and regional levels.



Expected Results

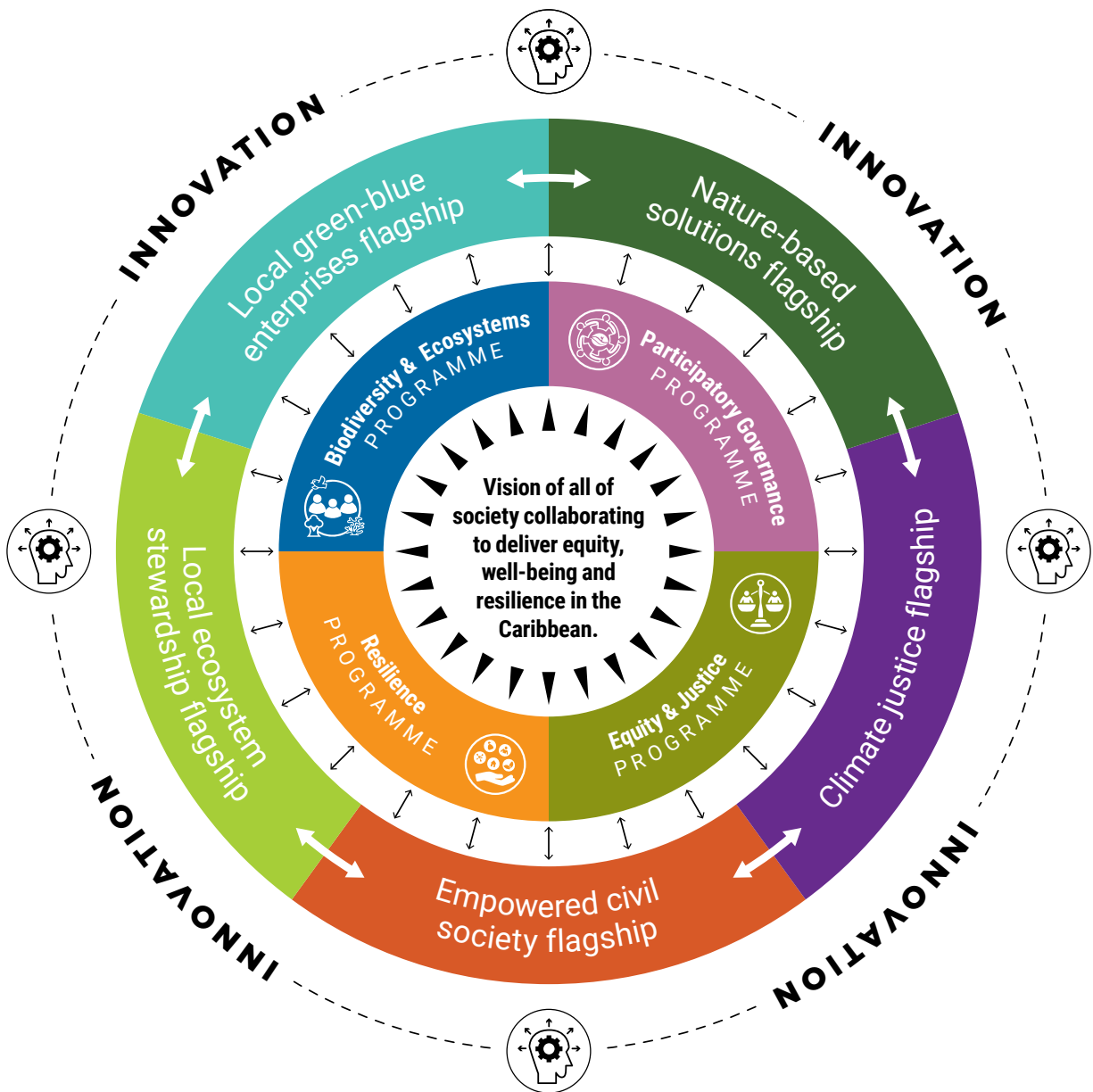
Better understanding, improved advocacy on and capacity for holistic approaches to building **resilience** to climate change, natural disasters and other risks to Caribbean people, ecosystems and economies.

-  Conservation, sustainable use and restoration of **biodiversity and ecosystems** in support of Caribbean social, cultural and economic development.
-  Greater **equity and justice** in meeting the environmental and livelihood needs of poor and vulnerable people.
-  Empowered people and institutions for **participatory governance** of natural resources.
-  Collaboration with stakeholders to facilitate **innovation** in approaches, institutions and enterprises, and advocacy for their widespread uptake, needed to make the transformation to sustainable development in today's rapidly changing world.



Our flagships

We prioritise five flagship areas of work that drive an integrated approach to delivering results across our programmes. These flagships address priority challenges and opportunities currently facing Caribbean sustainable development:



Graphic showing the relationship between Strategic Vision, Programmes and Flagships

CANARI delivers

Innovation permeates CANARI's work. In 2009, we became the first Caribbean organisation to receive the MacArthur Award for Creative and Effective Institutions, recognising our commitment to creative, community-driven solutions. Our role in developing new approaches, methods and tools is less to lead and more to facilitate the work of stakeholders on the ground. We bring stakeholders together to co-create and test new approaches, build capacity to apply them, and advocate for their widespread uptake.

Our transparent systems, hands-on mentoring, and emphasis on locally led approaches have helped build credibility and trust with governments, local stakeholders and funders.

We continue to serve as a dynamic, grounded and effective organisation, playing a trusted intermediary role between governments, funders and grassroots actors. We have cultivated strong relationships with diverse funders, and maintain a solid track record of financial accountability, project delivery, and impact.

Our funding partners include multilateral institutions (e.g., GEF, UNDP, UNEP), bilateral donors (e.g., UK Darwin Initiative and the EU), private foundations (e.g., Open Society Foundations), and international and regional financing mechanisms (e.g., GCF, CEPF, Caribbean Biodiversity Fund). We have more than 120 local partners, ensuring that resources and technical assistance reach those on the frontlines of environmental and social transformation.



Seine fishing, Caribbean. Credit: Natalie Boodram

CANARI's work is aligned to the Sustainable Development Goals (SDGs) framework as well as other international agreements, including the United Nations Framework Convention on Climate Change (UNFCCC) and Paris Agreement on Climate Change, the Convention on Biological Diversity and the Global Biodiversity Framework, the UN Decade on Ecosystem Restoration, the Sendai Framework for Disaster Risk Reduction, and the Escazú Agreement. It also supports delivery of key regional strategies and plans such as the CARICOM Environment and Natural Resources Policy Framework.



AUGUST 2025

www.canari.org

CONTACT US:
Caribbean Natural Resources Institute
105 Twelfth Street, Barataria
Trinidad and Tobago
868 638 6062 | 868 674 1788
info@canari.org