



Gender in Caribbean COVID-19 recovery initiatives as part of transformation to inclusive, green and resilient development

PRELIMINARY RESEARCH FINDINGS

Nicole Leotaud

Caribbean Natural Resources Institute (CANARI)

66th session of the Commission on the States of Women CSW66

Side event - Climate crisis and COVID-19: Are women empowered to navigate crises?

March 17, 2022

This research was supported through financial assistance from the **European Union** (ENV/2016/380-530), **MAVA Foundation** and the **Open Society Foundations**.

The contents of this presentation are the sole responsibility of CANARI and can under no circumstances be regarded as reflecting the position of the European Union, MAVA Foundation or Open Society Foundations.



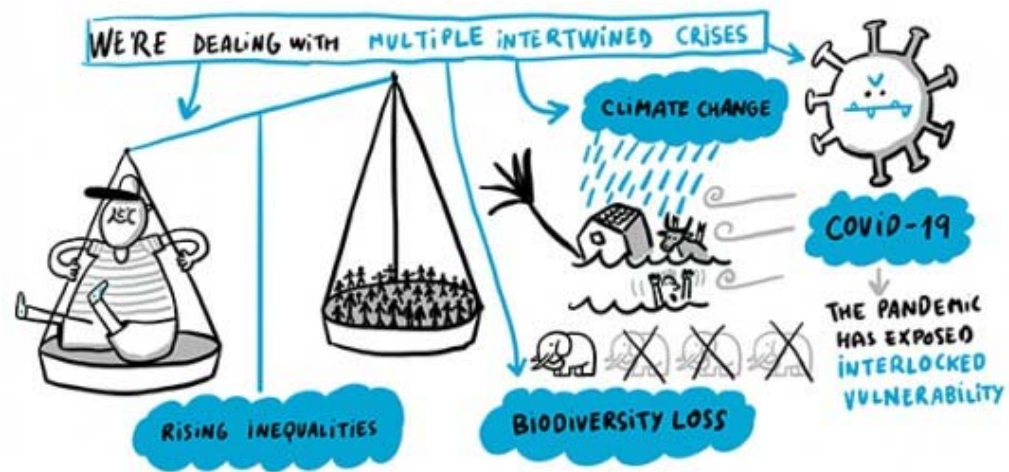


Image credit: International Institute for Environment and Development (IIED)
<https://www.iied.org/green-recovery-covid-19-not-without-climate-nature-development-solutions>

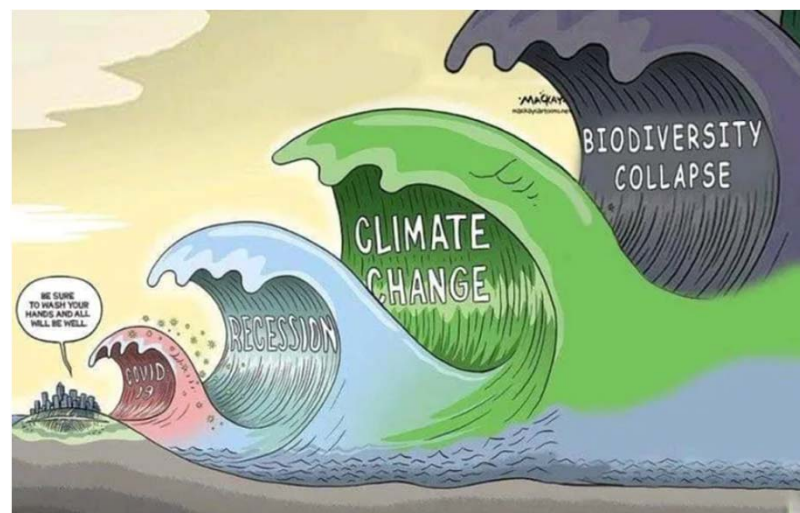
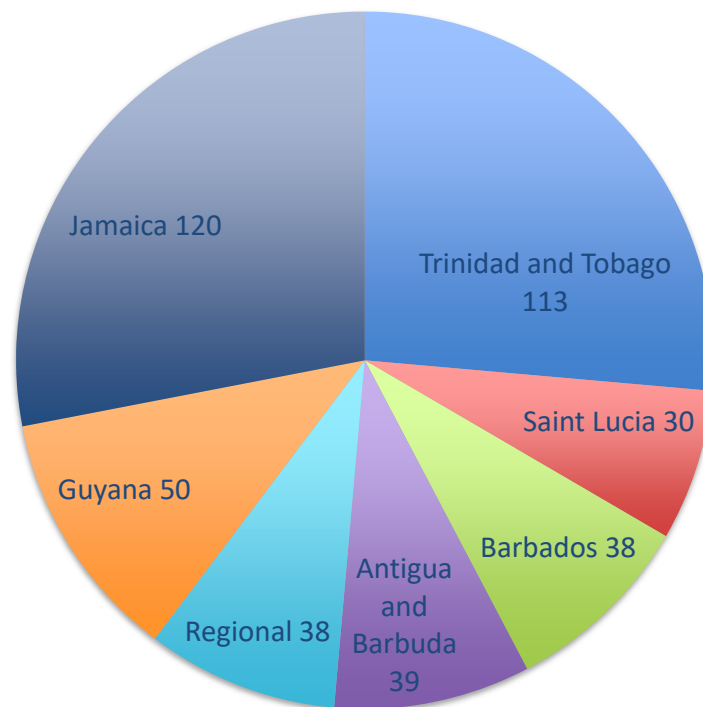


Image credit: Graem MacKay
mackaycartoons.net



Are Caribbean public sector COVID-19 recovery initiatives aligned with inclusive, green and resilient development?

428 initiatives





Framework for an inclusive, green and resilient COVID-19 recovery in the Caribbean context

[4 principles & 18 indicators]



Research methodology

- Desk research was conducted June 2021 – March 2022 of public sector initiatives (national plans, budget statements, KPMG country tracker, online project databases, news sources, etc.)
- Focus not on relief, but recovery and restructuring.
- Initiatives were classified against framework and its 18 indicators, noting the targeted sector(s), type of initiative as well as the strength of the linkage to the indicator.
- Some initiatives aligned to more than one indicator.
- Research did not assess implementation results, only the stated intention of the initiative.

Types of initiatives

Existing initiative

Recommendation/
policy

Plan

Action/
investment/

Strength of linkage

“Brown”
(negative)

Ambiguous

Weak linkage to
indicator

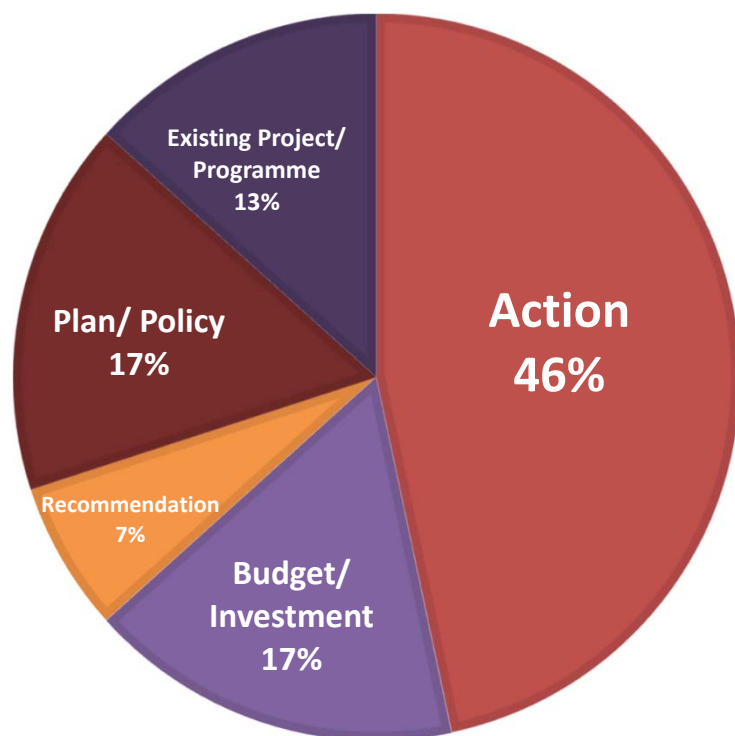
Medium linkage
to indicator

Strong linkage
to indicator

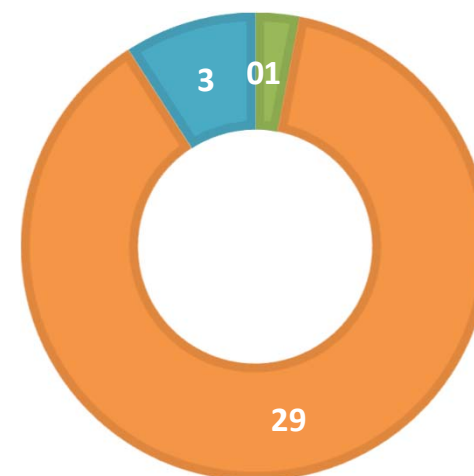
Only 30 (7%) initiatives linked to women / gender across 9 sectors, with only 10 directly related to addressing 'Gender'



Most of the 30 initiatives linked to women / gender are actions or already have budget assigned



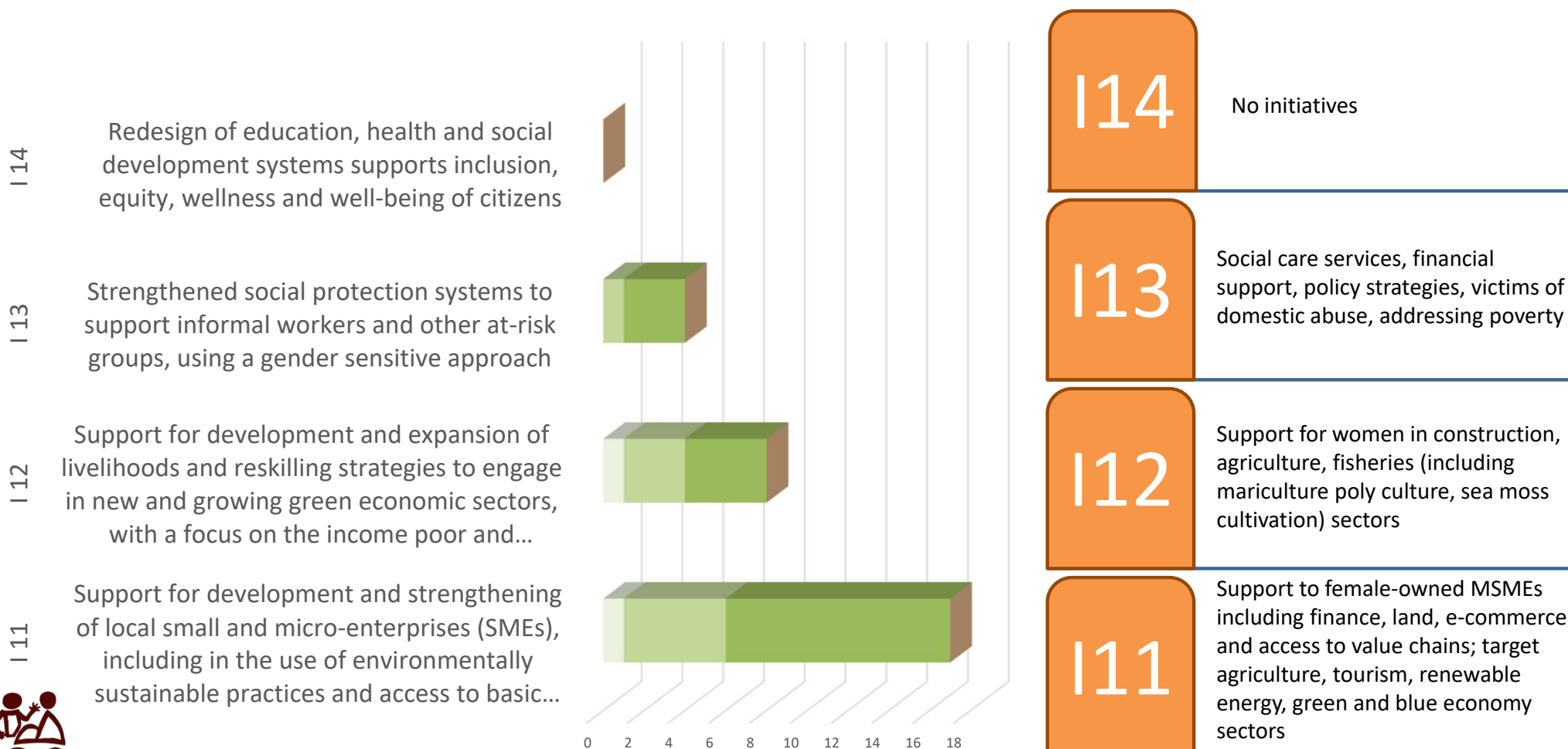
Most of the 30 initiatives linked to women / gender are addressing inclusion



- Transformed Economic Governance
- Environmental Sustainability
- Inclusion
- Resilience

■ # of Initiatives with weak linkage to indicator
 ■ # of Initiatives with strong linkage to indicator
 ■ # of initiatives considered ambiguous
 ■ # of Initiatives with medium linkage to indicator
 ■ # of initiatives considered "brown"

Inclusion (I) (29 initiatives)



I14

No initiatives

I13

Social care services, financial support, policy strategies, victims of domestic abuse, addressing poverty

I12

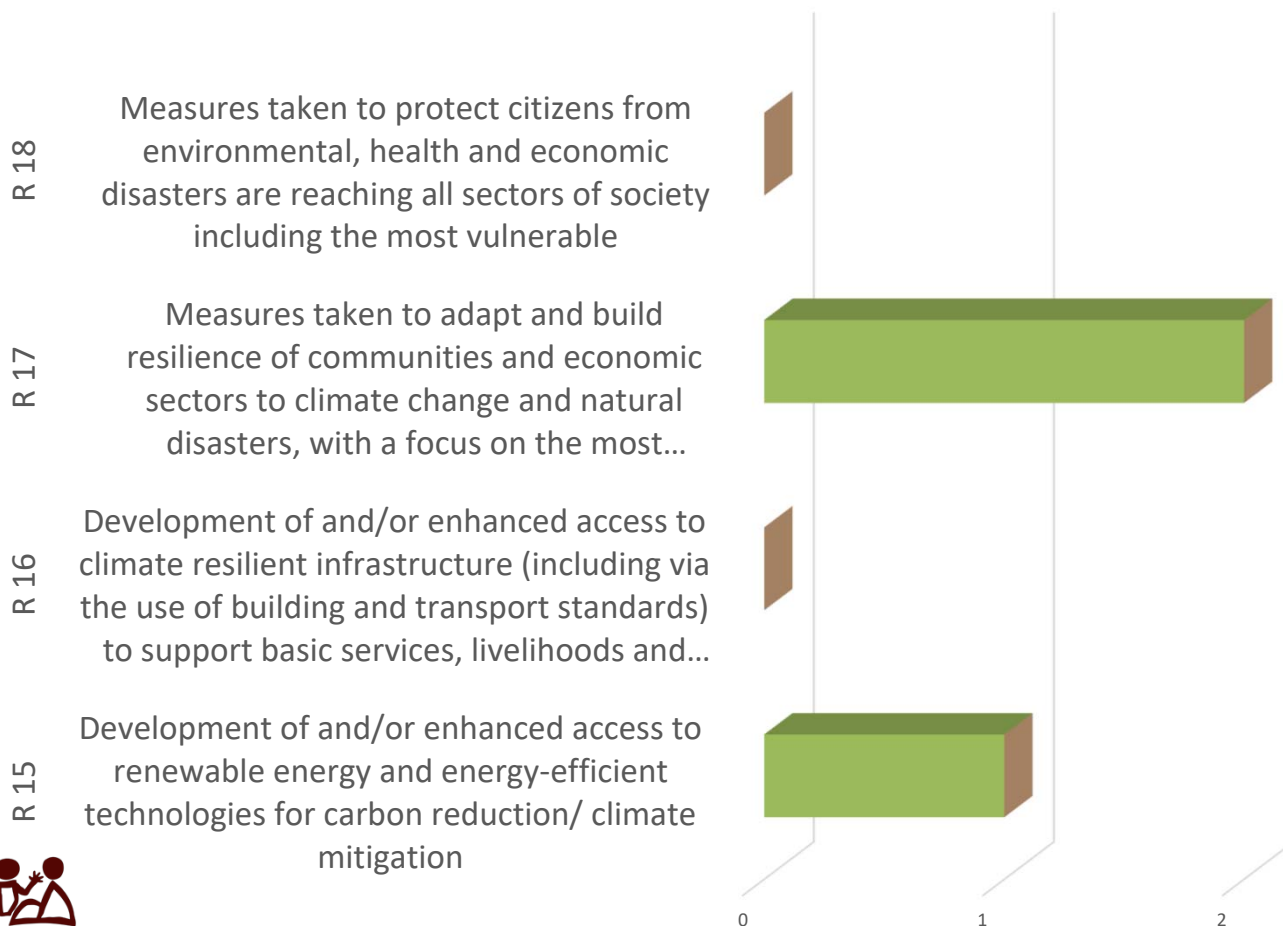
Support for women in construction, agriculture, fisheries (including mariculture poly culture, sea moss cultivation) sectors

I11

Support to female-owned MSMEs including finance, land, e-commerce and access to value chains; target agriculture, tourism, renewable energy, green and blue economy sectors

0 2 4 6 8 10 12 14 16 18

■ # of Initiatives with weak linkage to indicator
 ■ # of Initiatives with strong linkage to indicator
 ■ # of initiatives considered ambiguous
 ■ # of Initiatives with medium linkage to indicator
 ■ # of initiatives considered "brown"



Resilience (R) (3 initiatives)

R18

No initiatives

R17

TT: Agri stimulus for MSMEs and women in building resilience; SLU climate resilient insurance for fisherfolk (along value chain, including women)

R16

No initiatives

R15

ANB: 100% of female-headed households have access to renewable energy, 20% increase in the number of women-led businesses implementing renewable energy and adaptation interventions

- # of Initiatives with weak linkage to indicator
- # of Initiatives with strong linkage to indicator
- # of initiatives considered "brown"
- # of initiatives considered ambiguous

Environmental sustainability (ES) (1 initiative)



ES10

No initiatives

ES9

No initiatives

ES8

No initiatives

ES7

GUY: Aims to develop gender responsive land degradation actions to support food security and economic well-being

0

1

Transformed Economic Governance (TEG) (no initiatives)

- TEG 6 Development and use of comprehensive wealth accounting systems (incorporating human, social, natural and financial/physical capitals)
- TEG 5 Digitisation and technological innovation used to support recovery
- TEG 4 Transition to green, inclusive and resilient economic development supported by financing and fiscal mechanisms (e.g., green public procurement, green trade, green investment, public expenditure reviews, tax reform,...)
- TEG 3 Mechanisms are put in place for Caribbean cooperation (e.g., on intra-regional trade and investment, knowledge sharing) and joint actions to support a just and sustainable transition
- TEG 2 Mechanisms are put in place for cross-sectoral collaboration and partnerships at the national level to mobilise knowledge and resources for recovery actions
- TEG 1 Mechanisms are put in place for participatory, bottom-up and decentralised economic decision-making and monitoring, including development and monitoring of COVID-19 recovery plans and national development plans



Key messages: Gender in Caribbean COVID-19 recovery initiatives

Positives -> implement and expand

- There is a strong focus on supporting female-led businesses (micro and informal?), and some support for expansion of livelihoods and reskilling

Gaps -> opportunities to address

- Few (only 7%) of initiatives are directly addressing gender / women
- There is limited focus on addressing gender in social protection systems
- There is limited attention to building resilience of women to climate change and natural disasters
- There is no attention to gender issues in economic transformation (e.g., gender-sensitive budgeting, partnerships, decision-making on development and recovery)



CANARI next steps

www.canari.org



Finalise the
research



Conduct
the analysis



Publish and
communicate
findings



Facilitate
dialogues



Advocate
for policy
influence



Collaborative
action to
address
priorities and
gaps