



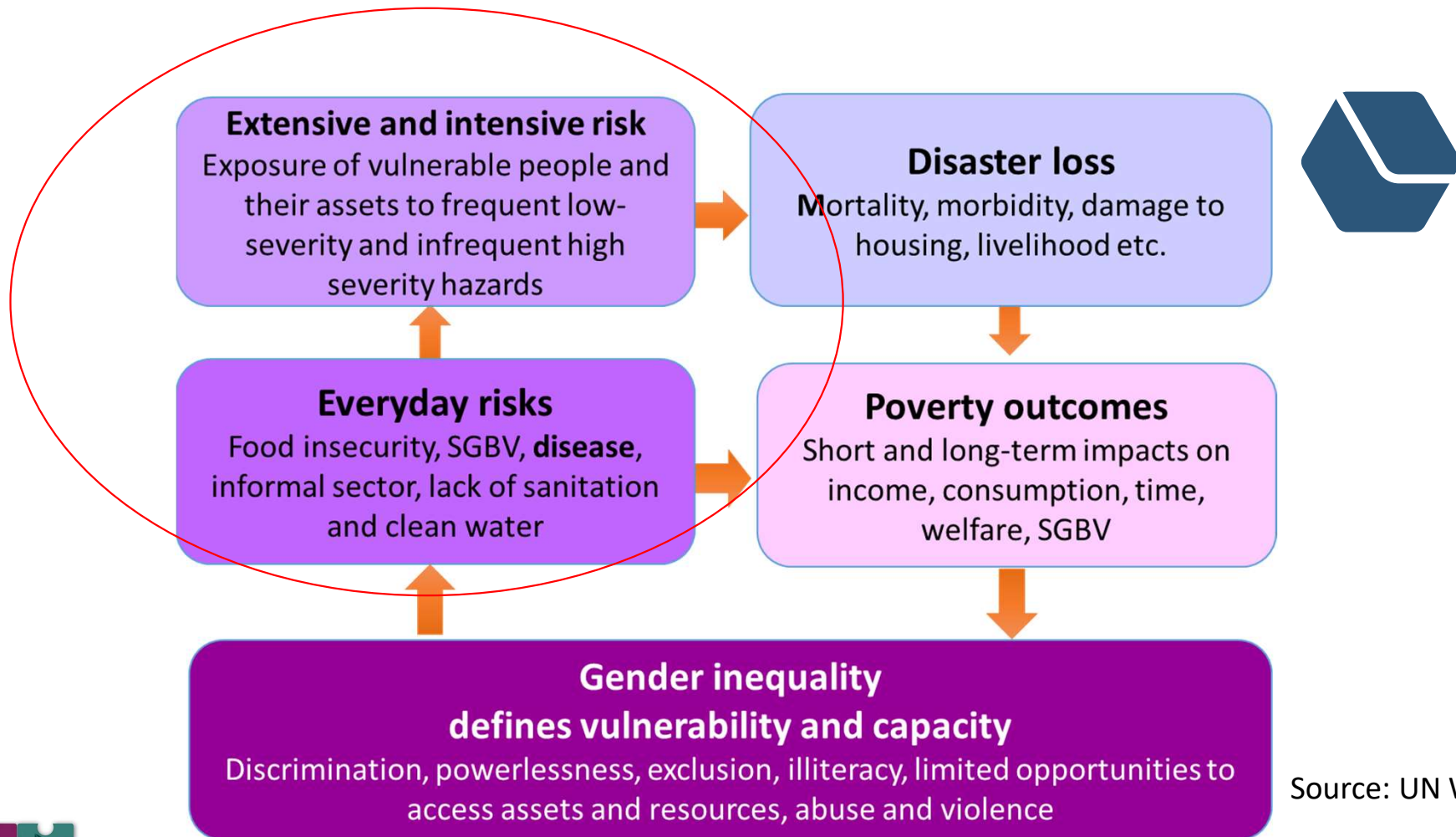
ENGENDERING LOCAL RESILIENCE

PRESENTATION BY LEISA PERCH, SOCIO-
ENVIRONMENTAL CONSULTANT

*REGIONAL FORUM: CATALYSING INNOVATION &
PARTNERSHIPS TO BUILD LOCAL DISASTER RESILIENCE IN
CARIBBEAN COMMUNITIES*

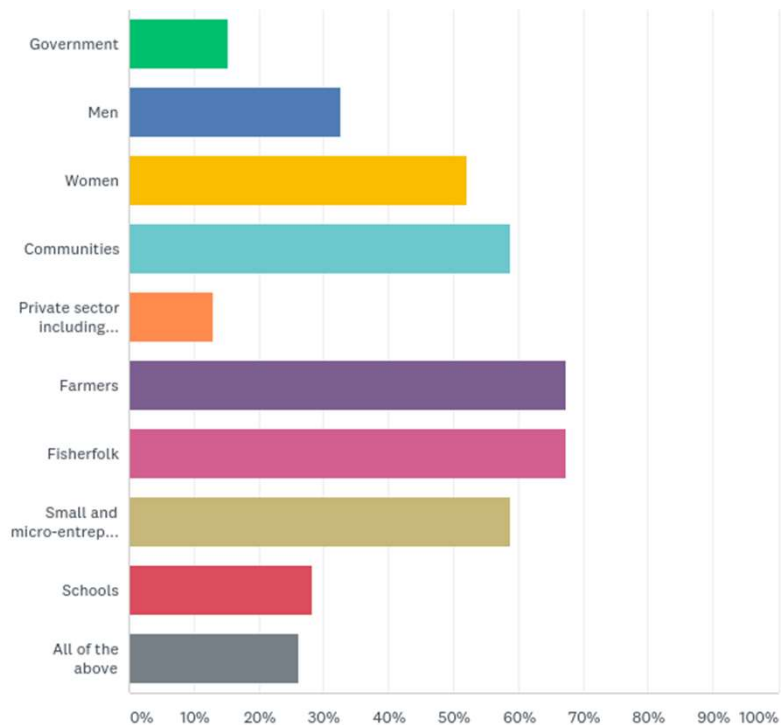
JULY 23RD , 2020

THERE IS A GENDER INEQUALITY OF RISK

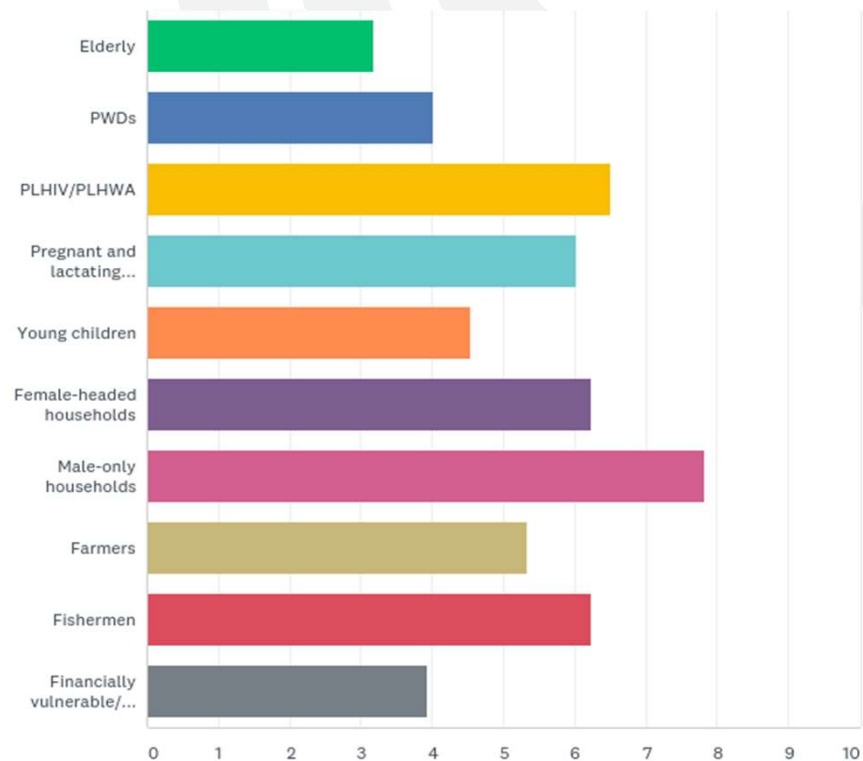


Source: UN Women

Q8: WHICH OF THE FOLLOWING LACK THE KNOWLEDGE, CAPACITY AND OPPORTUNITIES TO TAKE SHORT-TERM MEASURES TO LIMIT CLIMATE AND DISASTER IMPACTS? SELECT AS MANY AS RELEVANT FROM LIST BELOW.



Q10: PLEASE RANK FROM 1 TO 10 WHO IS LEAST ABLE TO COPE WITH DISASTER AND CLIMATE IMPACTS AND/OR ADAPT TO OR AVOID THEM WITH 10 = HIGHEST RISK (LEAST ABLE TO COPE) AND 1 = LOWEST RISK (BEST ABLE TO COPE).



EnGenDER Survey, 2018

DIRECT ACTION
*(Example from
 shock-responsive
 mechanisms by
 WFP and UNICEF)*

Emergency CASH Transfer

FOR DOMINICANS MOST AFFECTED BY HURRICANE MARIA

BENEFICIARY SELECTION CRITERIA

Category 1 The eligible households will need to meet the following criteria simultaneously

- The household has **lost the main source of income**
- The head of the household is **currently unemployed**
- There is **no other household member currently working**

OR

Category 2 The eligible households will need to meet the following criteria simultaneously

- The head of the household is **currently unemployed**
- There is **no other household member currently working**
- The house was **destroyed or severely damaged**

AND

The households falling under both categories need to meet **ONE OF THE FOLLOWING CRITERIA** in order to be eligible:



It is a single-headed household with 2 or more children



There are more than 2 dependants in the household



The house consists of **ELDERLY PEOPLE ONLY** or **ELDERLY PEOPLE** caring for **CHILDREN**



There are pregnant/lactating women or children under 2 years in the household



There are chronically ill or physically/mentally ill challenged in the household



The household is caring for a foster child



The house was destroyed or severely damaged

277-8667; 285-0985; 614-3000 domeomaria@gmail.com the Beneficiary Selection Committee of your community

THE PROCESS IS ONGOING. IF YOU HAVE NOT BEEN REACHED, PLEASE CHECK WITH YOU VILLAGE COUNCIL.

Implemented by:



Supported by:




Funded by:








MOVING BEYOND THE HOUSEHOLD AND THE INDIVIDUAL



FRAGILITY

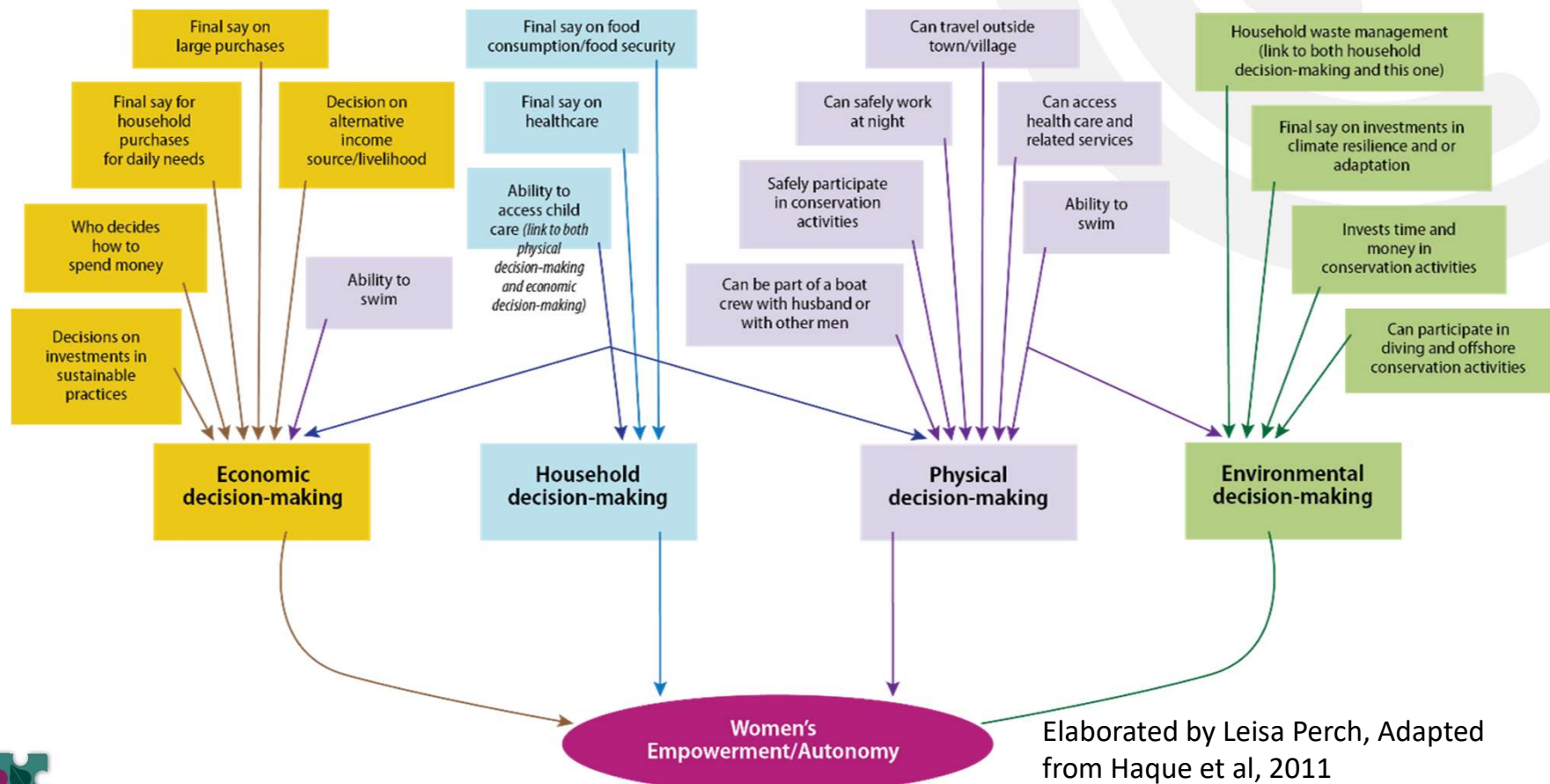
- ❖ PROFESSIONS/LIVELIHOODS STREAMS ARE HIGHLY GENDERED
- ❖ GENDER SEGMENTED ROLES WITH VARYING VALUES AND PAY
- ❖ HIGH RESOURCE-DEPENDENCY
- ❖ INDUSTRIAL STRUCTURES LIMIT OPTIONS AND ADAPTATION



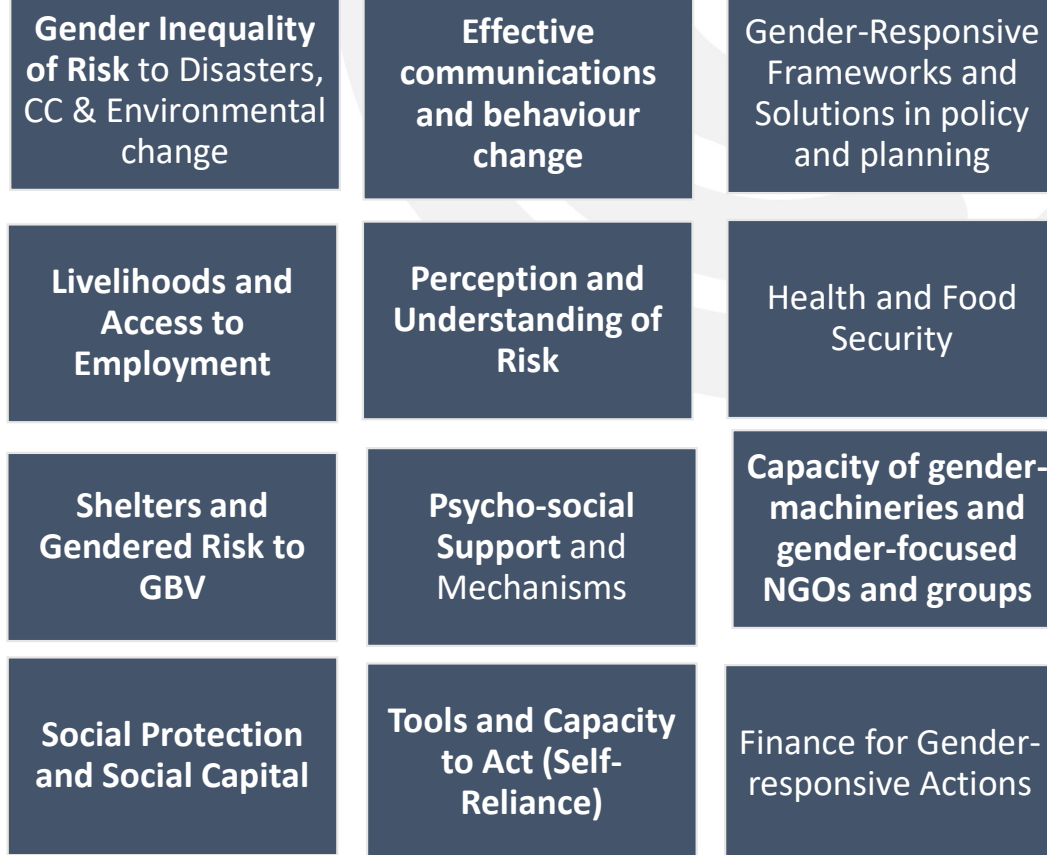
PRECARITY

- ❖ SOME JOBS ARE HIGHLY INFLUENCED BY HEALTH, WEATHER AND PERSONAL WHIMS (TOURISM)
- ❖ SEASONALITY LINKED TO INCOME DIPS/GAPS
- ❖ JOBS WHICH ARE INFORMAL: LOW VALUE, LIMITED ACCESS TO FINANCE AND EMERGENCY SUPPORT

DOING GENDER BETTER: EXPANDING CONCEPT OF DECISION-MAKING



ENTRY POINTS FOR ENGENDERING RESILIENCE



Source: Presentation of initial fieldwork findings from the ENGENDER Project
(UNDP/GAC/DFID), July 2018

THERE IS INNOVATION.....

- Concessional loans to households and small businesses for adaptation (Antigua and Barbuda, Grenada and Saint Lucia)
- Linking conservation activities and women's economic empowerment (Kido Foundation, Carriacou/Grenada)
- Restoration of Mangroves and Community co-management (RECOMM) (Grenada)
- Gender-sensitive NAP (Grenada)
- Women Making an Eco-system-based home garden (SVG)
- Department focused on the Culture of Risk (Martinique)
- The role of women in the rebuilding efforts after Hurricane Maria (Kalinago Territory, Dominica)
- Generic DRM Capacity Assessment Tool by CADRI (focused on National and Local Needs and linked to expertise and surge support)



BUT CHALLENGES PERSIST IN MAINSTREAMING GENDER

LACK OF ATTENTION AND UNDERSTANDING



General lack of attention to gender issues

Poor gender analysis

Diverse understanding of the context of gender equality, and its relevance (by academic, farmer, government employee or public decisionmaker etc.)

Conflating Gender, Diversity and Social inclusion

GESI-related **policy and governance challenges**

Ineffective or insufficient learning approaches (lessons from Ivan for Maria/Irma)

Struggle to address **safety and security issues** such as GBV



GETTING GENDER RIGHT IS NOT EASY



"Bridging social and environmental policy"

TRANSFORMING HOW AND WHAT WE DO

Example of a stop light exercise for a project review process in Saint Vincent and the Grenadines.

On Leadership	On Control over Resources	On Livelihoods	On Ecosystems Change	On Gender-based Rights and Participation	On Governance	On Gender-based Education & Assets
<p>Women's participation & role in decision-making, women's leadership and leadership on gender issues.</p> <p>Consideration is made of the role of institutions in leading on gender mainstreaming effectively and ensuring that GESI mainstreaming happens.</p>	<p>Decision-making on power of the resource to be used as sees fit.</p>	<p>Consider which livelihoods are dependent or influenced by climate change</p> <p>An example of this is a farmer whose crop is influenced by reduced rainfall or land which has become more saline as a consequence of sea level rise etc)</p>	<p>In the context of gender, it refers to gendered patterns of use, interaction and dependency on ecosystems and ecosystem functions/ services. It reflects that women and men both use natural resources, are both affected by poor resource quality & quantity in different ways.</p>	<p>The level of participation anticipated within activities identified as a project beneficiary and as a user. It also reflects efforts required to ensure effective representation across gender, race, class, disability and ethnicity.</p>	<p>How systems are governed; the role that gender plays in such systems. This is linked to gender-based rights and participation elements, but goes deeper into the access to decision-making structures: how issues of representation are addressed along with issues of power?</p>	<p>Focus is on the role that education levels, education approaches & access to information can play in driving interest, participation. The extent to which intended targets have that improve their resilience.</p>



Gender Needs Framework designed by Leisa Perch, elaborated here as a Stoplight Exercise

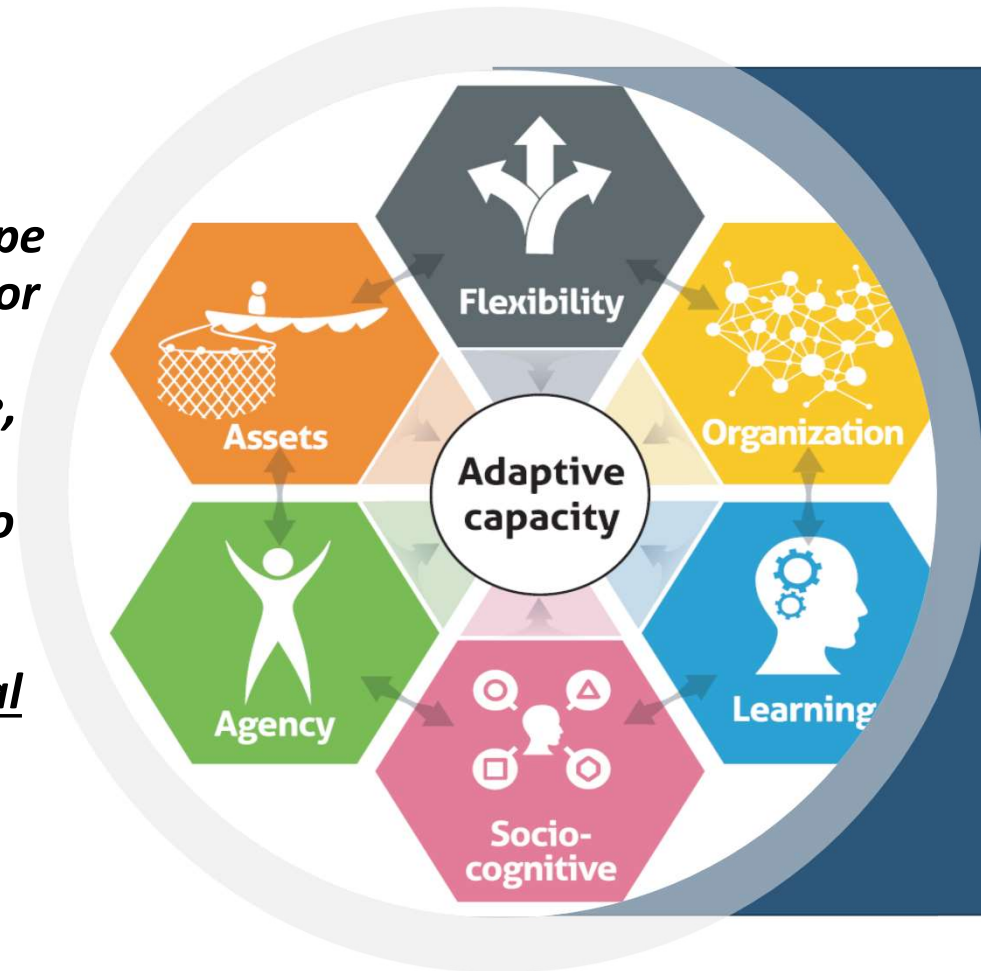
TRANSFORMING HOW AND WHAT WE DO



TRANSFORMING HOW AND WHAT WE DO

“the capacity to tolerate, absorb, cope with, and adjust to changing social or environmental conditions while retaining key elements of structure, function, and identity. The social dimensions of resilience are vital to understanding the impacts of environmental changes, such as climate change, on social-ecological systems”

Cinner and Barnes 2019



Source: Cinner and Barnes, 2019 [https://www.cell.com/one-earth/fulltext/S2590-3322\(19\)30007-7](https://www.cell.com/one-earth/fulltext/S2590-3322(19)30007-7).

KEY MESSAGES



- Building resilience and empowering communities means understanding and working with people.
- Gender Matters: Gender often shapes and informs vulnerability. It is also a window to other social drivers.
- Covid-19 has shown the need to expand our understanding of vulnerability to include fragility and precarity.
- In our frames of analysis, we must look beyond individuals and households, to understand the industries that also shape resource use and consume ecosystem services.
- Though gender mainstreaming in environment is inconsistent, there are interesting things happening in the region that we can build on.
- By revisioning notions of partnership, we can also transform what we do, for and with whom and create lasting change.



REFERENCES

- Socio-ecological Resilience: [https://www.cell.com/one-earth/fulltext/S2590-3322\(19\)30007-7](https://www.cell.com/one-earth/fulltext/S2590-3322(19)30007-7)
- Building Resilience with Nature and Gender: <https://www.youtube.com/watch?v=yvCy2Nu8NS8>
- GIFT/Women in Fisheries 2019: https://www.cavehill.uwi.edu/cermes/projects/gift/docs/wif_forum_2019_summary_report_27_may_2019.aspx
- https://www.dropbox.com/s/k6eilsy4q2haukr/Data_All_180728.pdf?dl=0
- ENGENDER Project overview: <https://open.undp.org/projects/102522>
- <https://drive.google.com/file/d/1qT84dEEb9Q1CJydJ0oJa9DcrunlBRxtg/view>
- Kido Foundation/Creative Women Carriacou: <https://www.facebook.com/KIDOfoundation/photos/cwc-launching-day-minister-of-carriacou-hon-kindra-maturine-stewart-tyrone-buckm/10157998692069128/>
- Womens Home Gardens: https://www.youtube.com/watch?v=ZW_INsTmRj8&t=35s/
- Project guidelines: https://www.dropbox.com/s/75b26qfuiisi4jf/project_implementation_guidelines_un.pdf?dl=0
- Capacity for Disaster Reduction Initiative (CADRI) Tool: <https://www.cadri.net/en/cadri-tool> and links to specific sectoral guidance
- Impact of hurricane Ivan on Grenada water supply: <file:///C:/Users/lperc/AppData/Local/Temp/EJPhurricaneivanandwatersupplyICE2010.pdf>
- Grenada: A Gender Impact Assessment of Hurricane Ivan: https://www.ipcc.ch/apps/nj-lite/ar5wg2/nj-lite_download2.php?id=9733





**“the social and the environmental must
now come together, indeed, they should
have never been apart”
(KIDO Foundation)**

THANK YOU!



lperch@outlook.com or
saediconsulting@outlook.com



N/A